

Using Web GIS to Improve Data Sharing and Enhance Operations

32nd Annual
Louisiana Remote Sensing
and GIS Workshop

Lafayette, LA

Tuesday, April 26, 2016



City of Baton Rouge

Open Government Initiative

- Mayor-President Melvin L. “Kip” Holden vision in 2014
- GIS staff consolidated in Information Services
- Launched Open Data BR in January 2015
- Followed with Open Budget BR
- Replaced eBRmap with new Map Portal in July 2015
- Published new GIS website at: <http://gis.brla.gov>
- Using Social Media to engage citizens
- Launched Expresit for public feedback
- Revamped 311 Citizen Request for Service in March 2016

Open Data BR

- 34 Datasets
- Several include GeoLocation Data for mapping
 - Crime, Fire, and Traffic Incidents
 - Adjudicated Tax Parcels
 - Building Permits
- Platform allows public users to create and save their own maps
- Also, allows public to submit apps for review to share with all
- Currently, Baton Rouge ranks 4th nationwide in the Open Data Census

eBRGIS Program Website

- <http://gis.brla.gov>
 - General Info about GIS Program
 - Lookup Tools
 - Metadata for all Enterprise datasets

eBRGIS Map Portal

- <http://ebrgis.maps.arcgis.com>
- Officially launched July 2015
- Used for public data sharing and internal City-Parish operations
- A wealth of web maps and applications
- 100+ web services in REST, WMS and WFS formats
- REST services are registered with Map Portal for easy searching
- 100 usernames for City-Parish staff to access secured maps, data, and the ArcGIS Collector app
- Planning to expand to accommodate Public Safety staff

eBRGIS Map Portal

- 8 data categories
- 32 user groups
- Over 100+ hosted feature layers and 2014 orthoimagery
- Local basemap

Featured Content

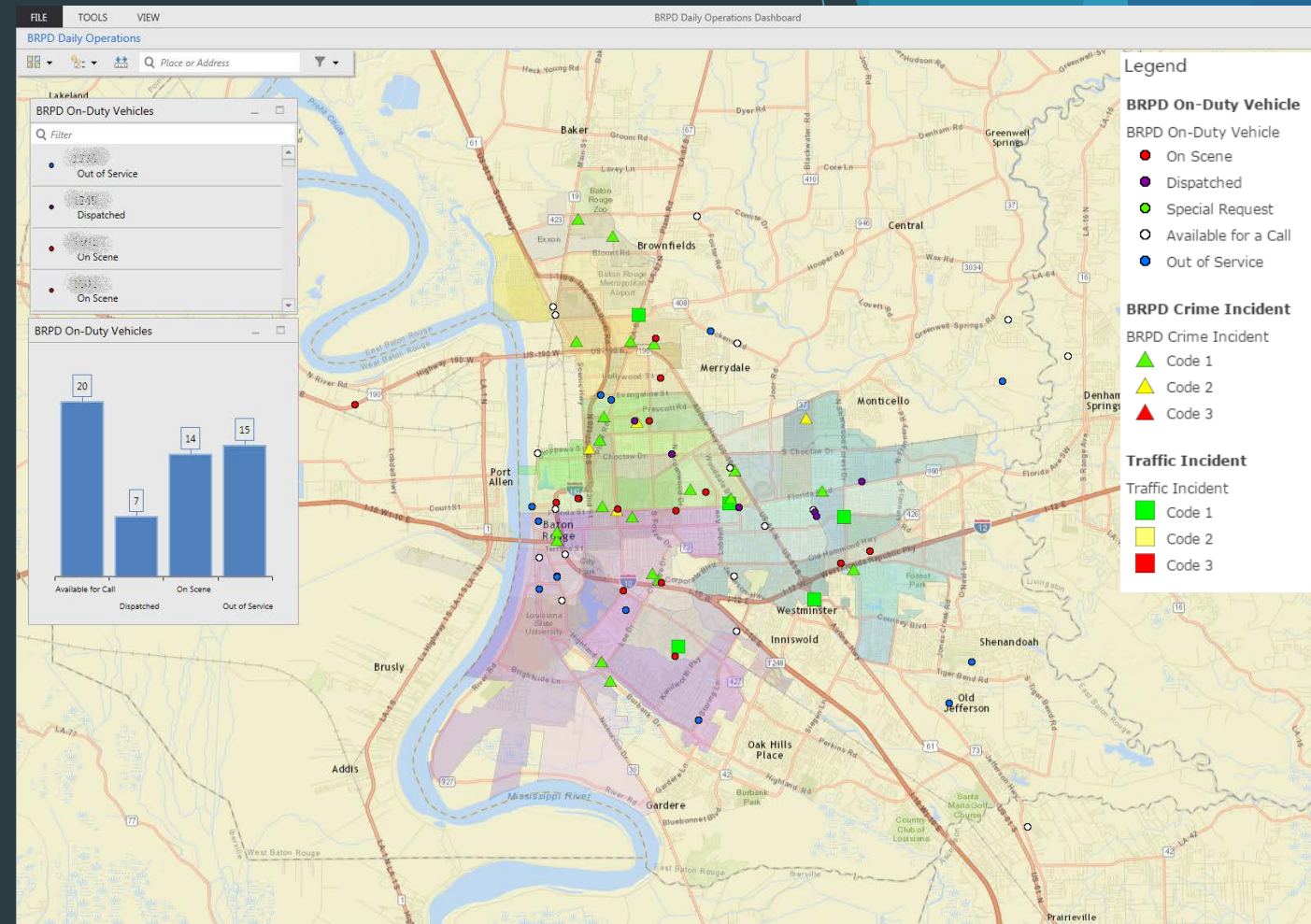
- Baton Rouge Traffic
- My Government Services
- Planning and Land Development
- Election Results and Elected Officials

Data Sharing

- City of Central address and property information
- My Permit Now building permit system
- Address Locator
- Routing Service
- Web services directory
<http://maps.brgov.com/gis/rest/services>

Public Safety Common Operational Platform

- An interactive digital mapping platform that consolidates various public safety-related data inputs, streams, and analytics into one central map-based environment
- Currently being piloted by BRPD
- Integrates disparate datasets encompassing three strategic public safety areas: daily operations, investigations and analytics, and emergency management



Conclusion

- GIS is taking a lead role in the Open Government Initiative
- New Web GIS platform makes it easier to share data with all users
- Internal users can leverage the same platform to enhance workflows using secure data and maps
- Web GIS has opened up a world of new possibilities for law enforcement and other public safety departments
- Web GIS is rapidly helping to realize the vision of the eBRGIS Program

More Information

Warren Kron, GISP
GIS Manager
Dept. of Information Services
(225) 389-3070
wkron@brgov.com

<http://gis.brla.gov>

